



**WELCOME TO**



**NAVAYUGA  
CONTAINER  
TERMINAL**





We aren't just changing our name.

We are changing the game.





# CVR Navayuga Group



The world's highest discharge capacity dam at the Polavaram Project accorded National Project status by the central Govt,



## Some Group Companies

- Navayuga Engineering Company
- Krishnapatnam Port Company
- Navayuga Power Corporation
- Navayuga Info Tech
- Navayuga Spatial Technologies
- Krishnapatnam Infratech
- Krishnapatnam Rail Company



India's longest bridge 9.15 kms – The Dholu Sadia Bridge inaugurated by the Hon'bl Prime Minister Shri Narendra Modi on 26th May 2017



Construction of Grade Separator at Azadpur Delhi

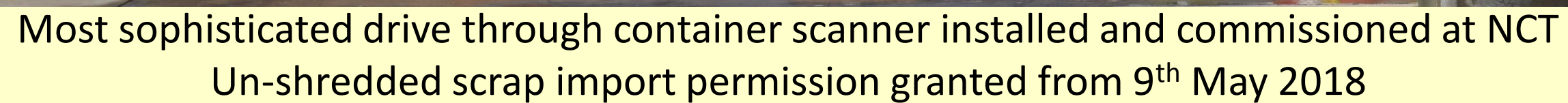


Sri Komaram Bheema Dam Project

## Some Navayuga Engineering Projects











## **1ST OF ITS KIND IN INDIA!**

- Rapiscan Eagle P60
- High Throughput Inspection with a Portal Scanner
- Inspect Dense Cargo with Powerful 6 MV X-ray Imaging
- Find Contraband with Material Separation
- Penetration up to 320 mm of steel
- 80 Scans / Hour

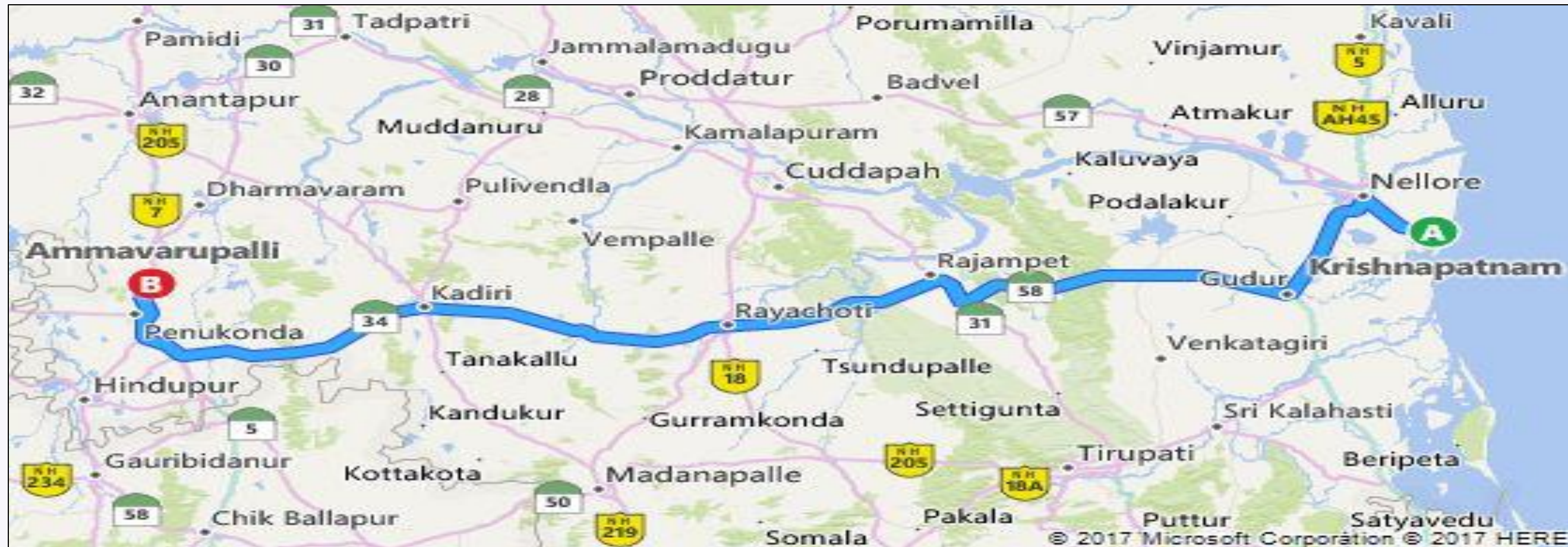


Dr. John Joseph, I.R.S.,  
Member( Budget & Vizag  
Zone),  
CBEC & DG, GST Intelligence,  
CBIS,  
New Delhi at NCT.  
Unveiling of the  
installation of the  
Drive through X- Ray  
container scanner  
& Radiation portal Monitors  
by top customs officers





# Kia Motors Plant in AP



Continuous engagement with Kia and Glovis

4 road points road work completed in record time

Distance from NCT : 439 kms

4 lane : 312 kms; 2 lane : 127 kms

Time : 20 hours with 2 drivers



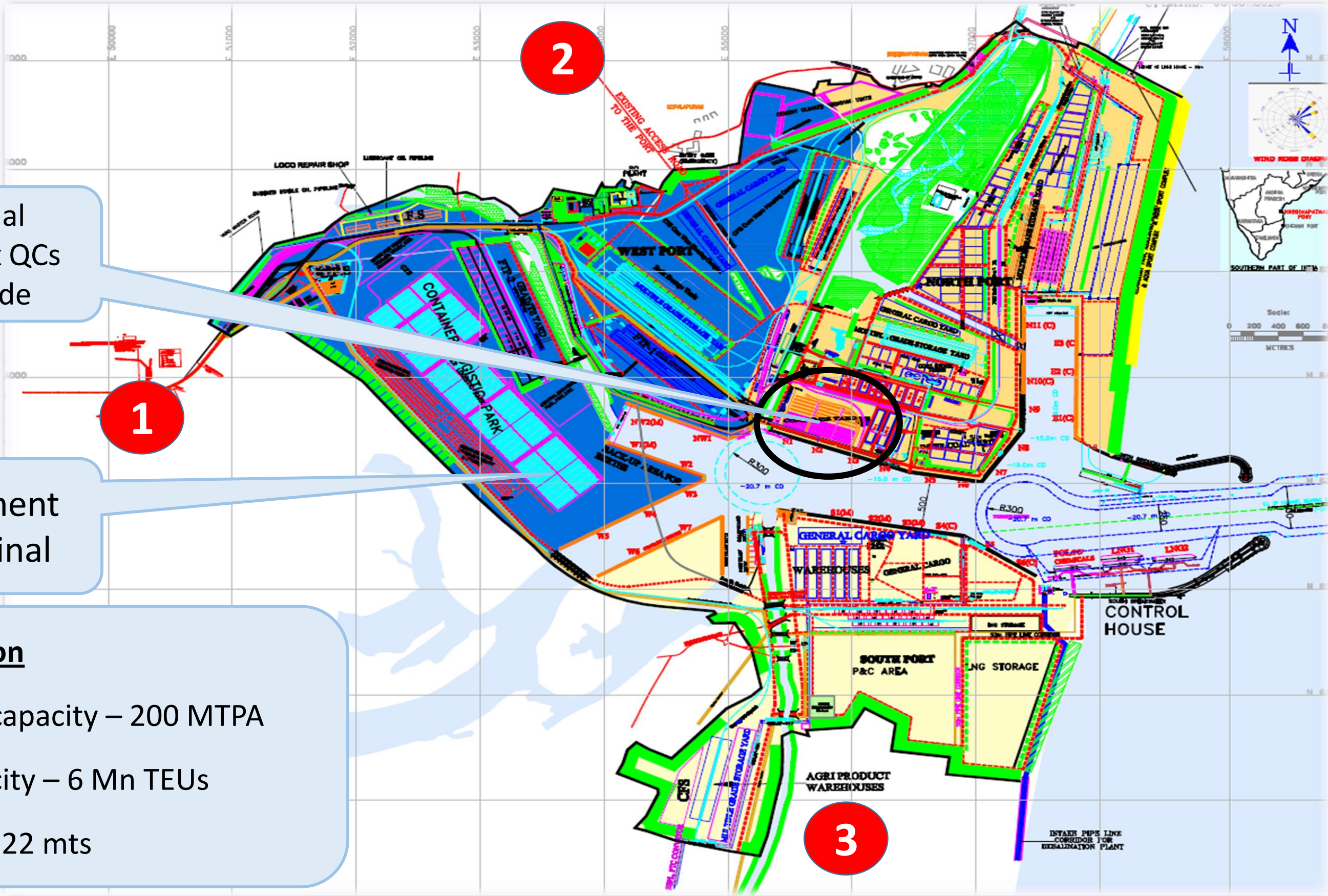


# ***NCT CONNECTIVITY***





# Access / Evacuation by Road



11 berths  
70 MMT

Port : 6800 acres  
External Land :  
12000 acres  
**Draft : 18.5 m**

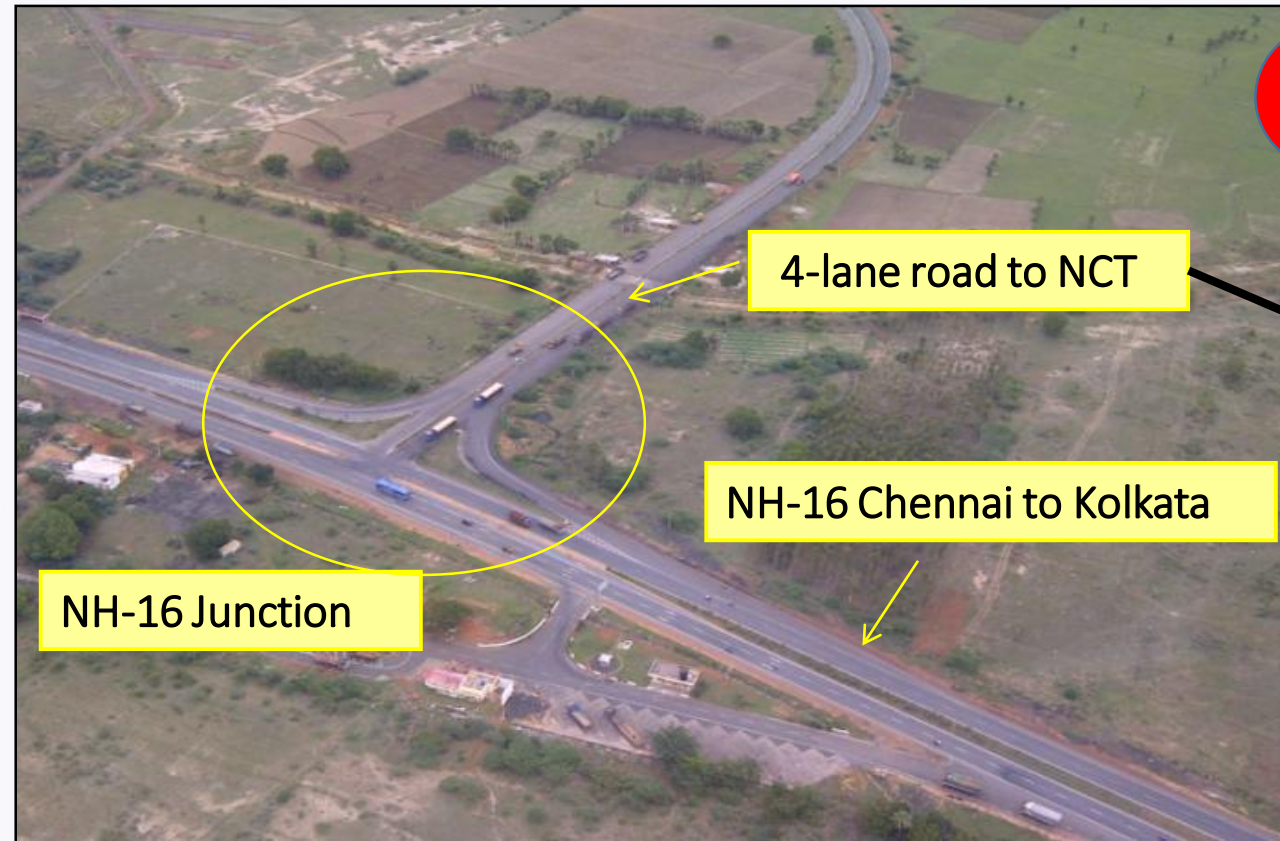
1.2 m TEU Terminal  
Super Post Panamax QCs  
Rail Siding alongside

Future development  
4.8 m TEU Terminal

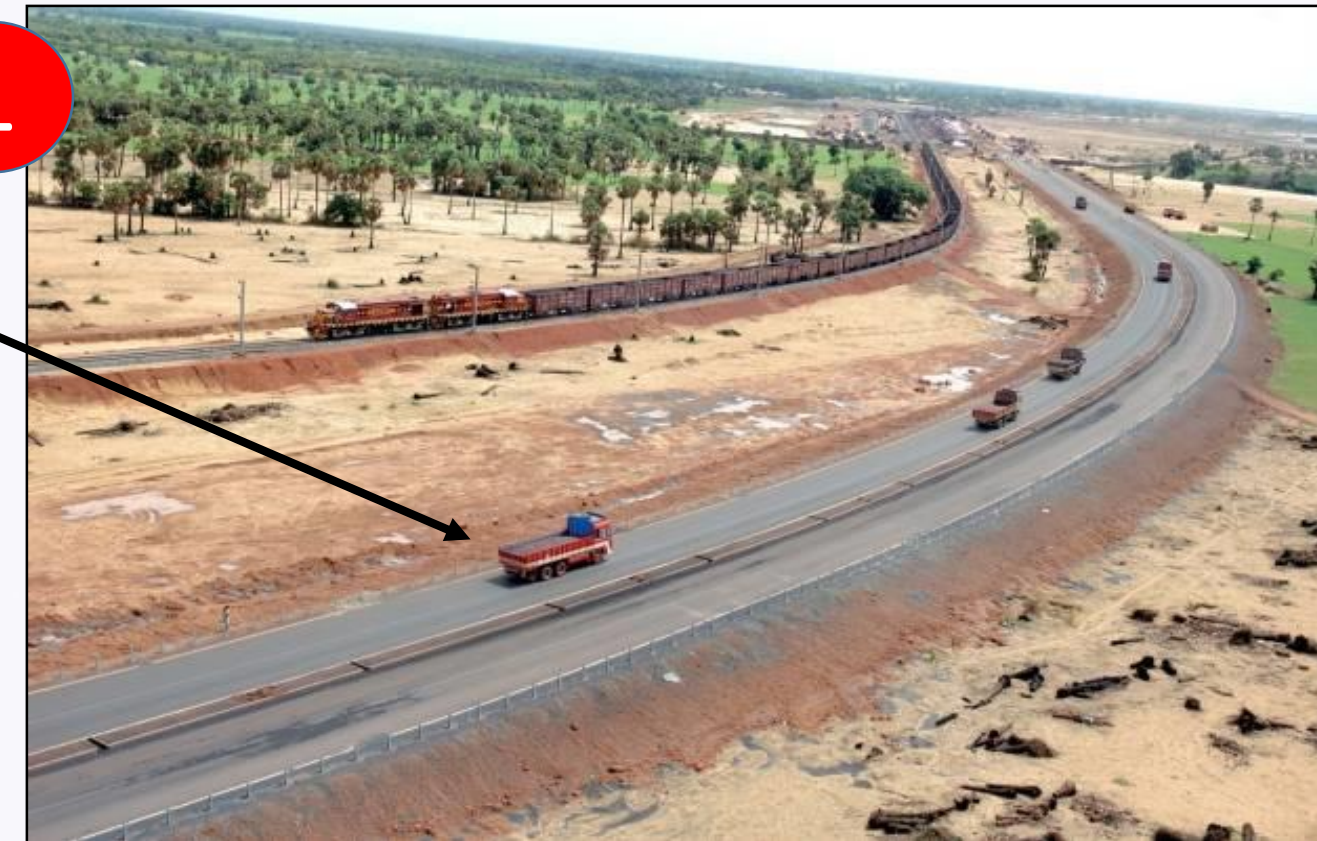
Future Expansion  
42 berths with capacity – 200 MTPA  
Container capacity – 6 Mn TEUs  
Deepest draft – 22 mts



# Road Connectivity Infrastructure

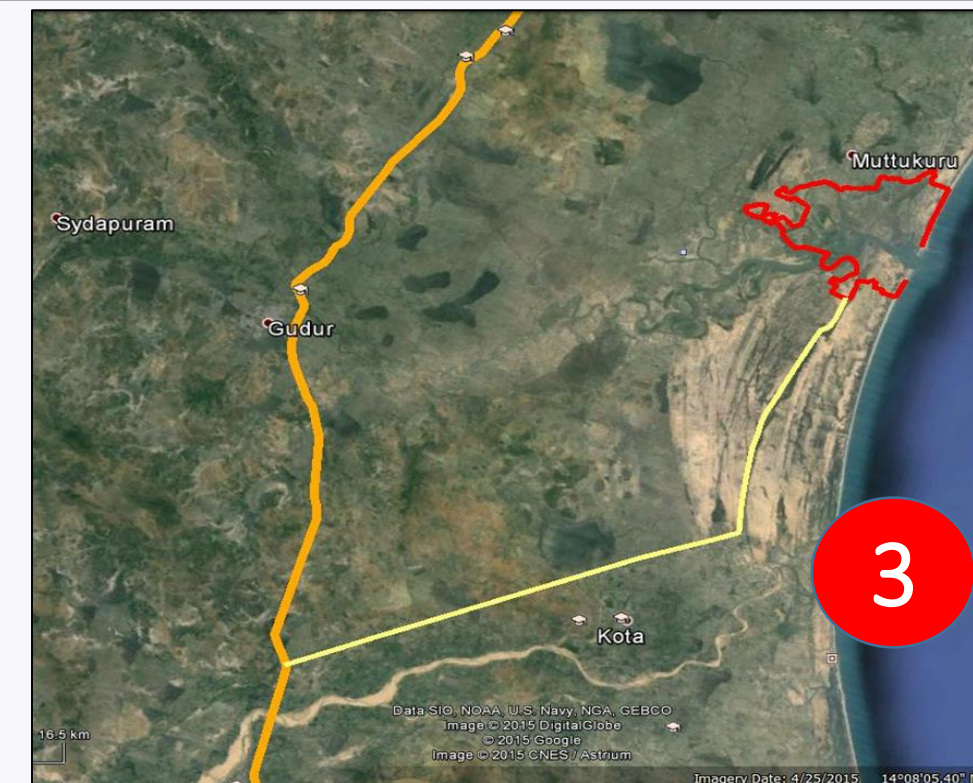


1



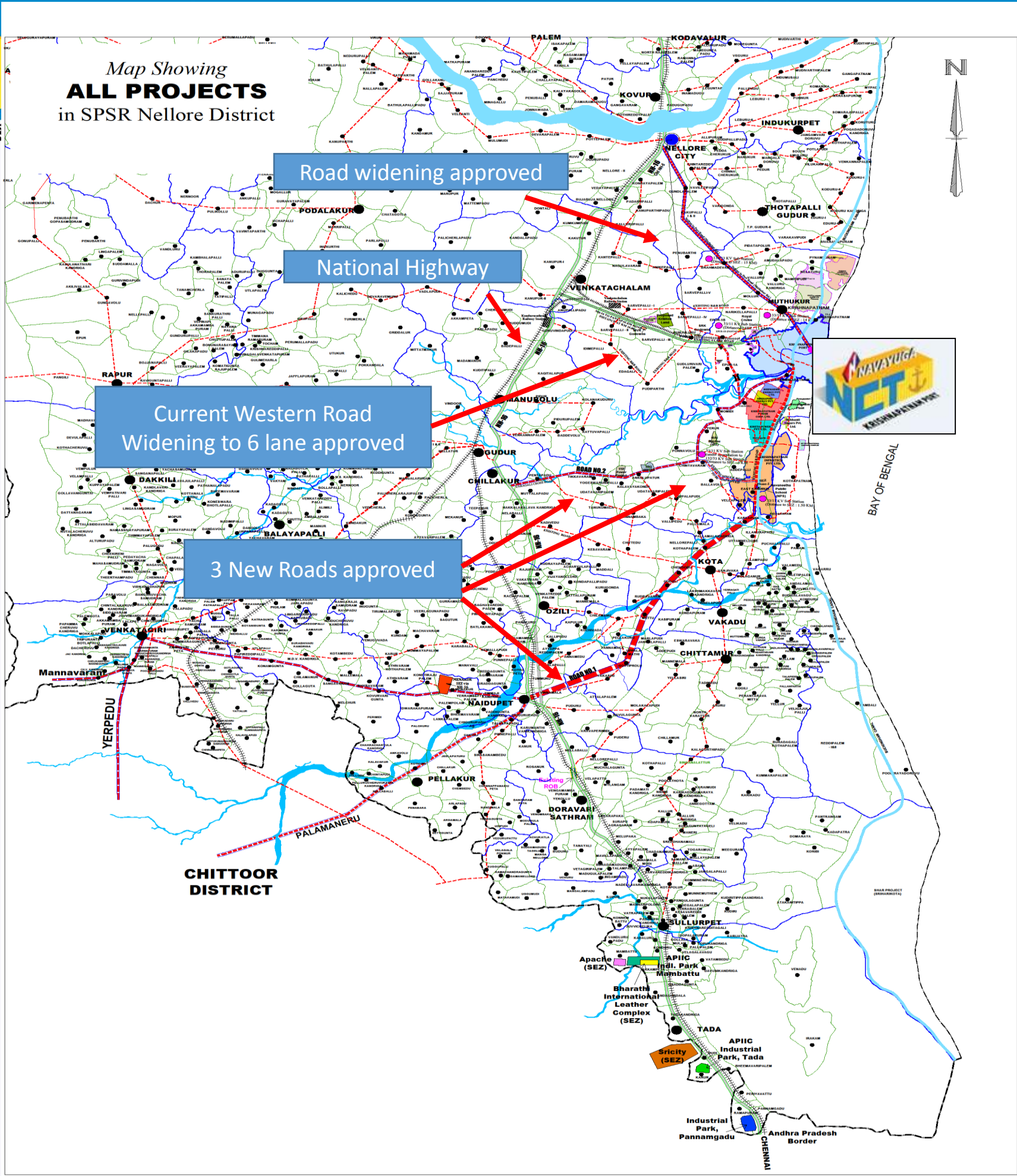
2

3 access/  
evacuation  
roads- West,  
North & South



3





All projects approved by Govt  
Tenders issued for construction  
Tenders awarded  
2-3 year timeline for the  
completion of all



# 5 New RTGs

Commissioned  
July 2018



5 new e-RTGs which have the potential to reduce energy costs by 80% and operating noise level by 65% whilst cutting down more than 1400 tonnes of Greenhouse Gases (GHG) emissions vis-à-vis the traditional diesel run RTGs.





# Berth Extension Plan

Berth for Coastal vessels : 150 m additional quay length; Handled with MHCs







Scheduled  
upgradation  
2019 Q2

Total Quay length :  
650 +150 +100 =  
900m  
3 SPP QCs – new  
acquisition  
Back up yard  
Terminal capacity  
upgradation to 2 m  
TEUs

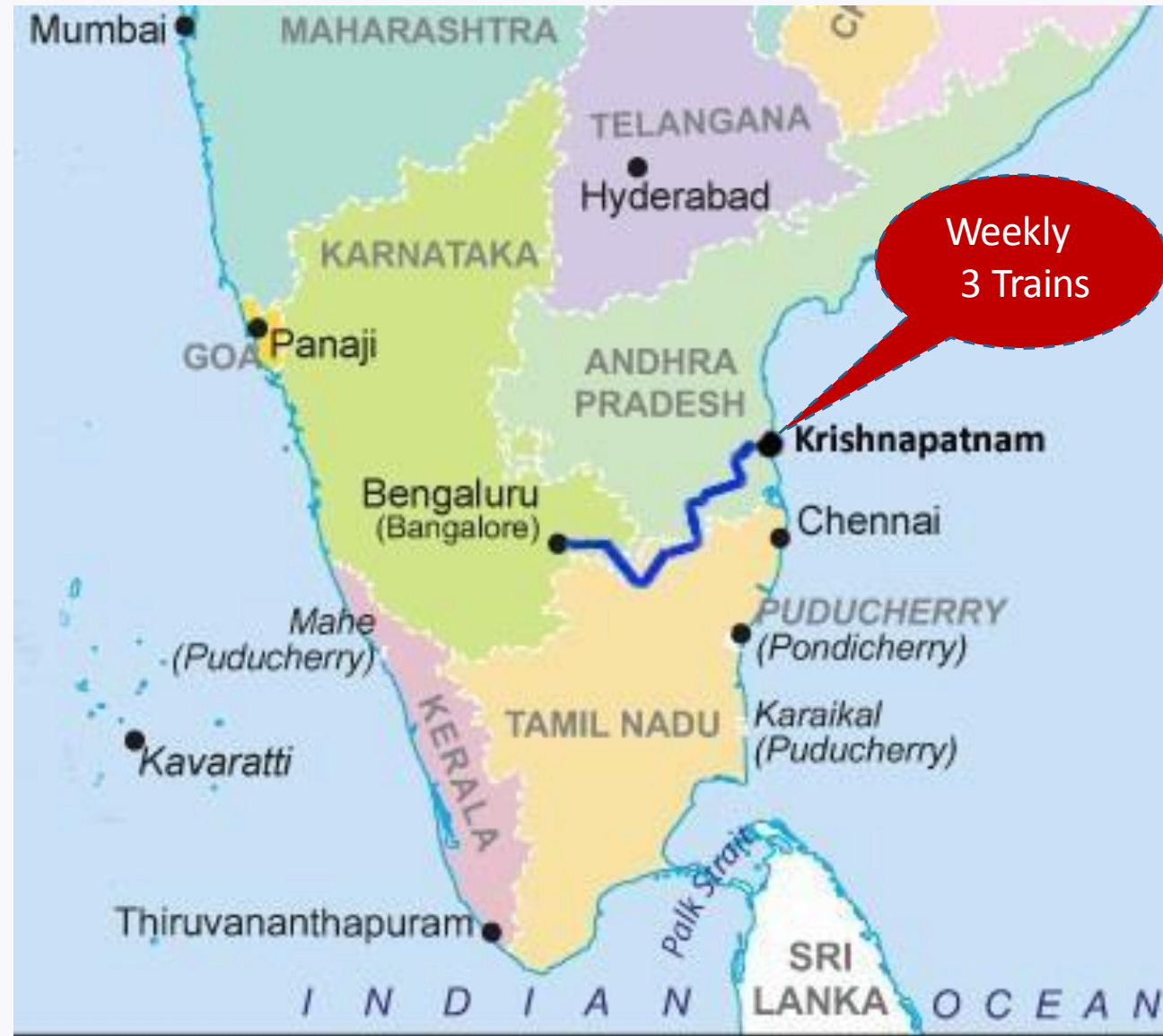
www.navayuga.com

## PROPOSED EXTENSION OF CONTAINER YARD & STRAIGHTENING OF RAILWAY LINE





## Weekly Rail Service from Bangalore



- From Bangalore, **IHC** and **THC** charges for KPCT and Chennai are same.

## Direct advantages of using Rail Service







Door to Door Cargo Service

### Customers

Exporters, importers, traders, brokers, forwarders supporting Liners at KPCT with incremental cargo

### Services

Ocean freight, warehousing, customs broking, transportation, handling, bonding, exim and domestic door delivery and pick up, surveys, fumigation, container purchase, cargo palletisation, packaging











# *PERFORMANCE*





# Vessel Services at KPCT

| Service oc  | Operator     | Coverage Area   | Frequency   | Day of Call                                     |
|---|--------------|---|-------------|---|
| Shuttle   | Maersk       | Colombo – Salalah - Colombo   | Weekly      | Sunday  |
| CHX   | Maersk       | Tanjung Pelepas – Xingang - Qingdao - Busan- Shanghai - Nansha  | Weekly      | Monday  |
| CCG   | Simatech EMC | Colombo - Jebel ali   | Tri Monthly | Tuesday   |
| CCS-1   | FAR Shipping | Colombo   | Weekly      | Wednesday                                       |
| ACS   | Hyundai/ Zim | Port Klang – Singapore – Cai Lan - Busan – Ulsan – Shanghai – Ningbo – Yantian                                    | Weekly      | Friday  |
| PIX-2   | Shreyas      | Tuticorin – Cochin – Jebel Ali -Mundra  | Weekly      | Friday  |
| Coastal Feeder Services for Transhipment Containers |              |   |             |   |
| ECS<br>2 loops/3<br>vessels                         | Shreyas      | 1. Krishnapatnam - Haldia – Paradip /Vizag/Kakinada - Krishnapatnam<br>2. Krishnapatnam - Kolkata - Krishnapatnam | Tri-Weekly  | Indian Flag feeder for transhipment containers  |
| Bharat Feeder                                       | Samudera     | Krishnapatnam - Vizag - Kolkata - Krishnapatnam   | Bi Monthly  | Indian Flag feeder for transhipment containers  |
| EXX   | XCL          | Kolkata – KICT - Krishnapatnam  | Weekly      | Foreign Flag feeder for transhipment containers |





# Direct Container Mainline Services Korea and China to Krishnapatnam

## Hyundai Merchant Marine ACS Service



## Maersk Line CHX Service







# Feeder Network for Transshipment



Mainline vessels calling at Krishnapatnam can tranship EXIM boxes for connection to/fro:

Kolkata  
Haldia  
Vizag  
Kakinada  
Cochin  
Tuticorin  
Kattupalli

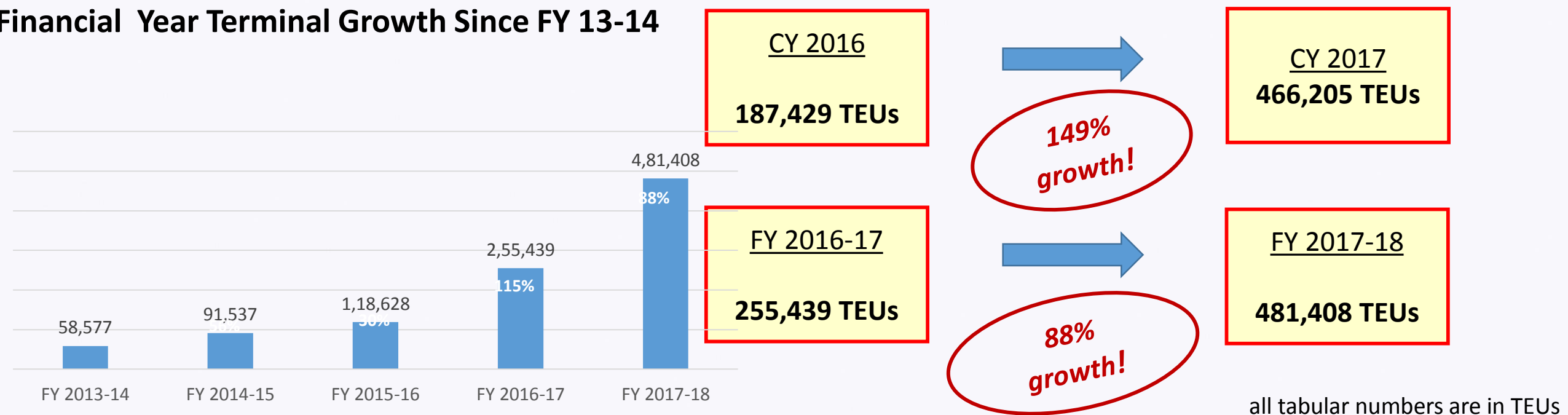




# FY 17-18 Terminal Throughput

| Months       | No. of Vessels | Laden         | Imports Empty | Total           | Laden           | Exports Empty | Total           | Coastal       | Transhipment    | Restow       | Grand Total     |
|--------------|----------------|---------------|---------------|-----------------|-----------------|---------------|-----------------|---------------|-----------------|--------------|-----------------|
| Apr          | 40             | 5,013         | 3,109         | 8,122           | 8,604           | 2,654         | 11,258          | 1,340         | 15,071          | 78           | 35,869          |
| May          | 36             | 6,154         | 3,651         | 9,805           | 8,681           | 4,415         | 13,096          | 835           | 14,451          | 43           | 38,230          |
| Jun          | 39             | 5,574         | 3,941         | 9,515           | 9,701           | 2,680         | 12,381          | 936           | 19,863          | 215          | 42,910          |
| Jul          | 38             | 3,925         | 3,382         | 7,307           | 9,677           | 3,044         | 12,721          | 1,509         | 19,007          | 232          | 40,776          |
| Aug          | 37             | 3,679         | 3,802         | 7,481           | 10,772          | 1,200         | 11,972          | 1,472         | 18,739          | 48           | 39,712          |
| Sep          | 34             | 3,218         | 4,095         | 7,313           | 10,265          | 957           | 11,222          | 884           | 17,672          | 88           | 37,179          |
| Oct          | 43             | 3,411         | 3,191         | 6,602           | 11,192          | 755           | 11,947          | 1,792         | 18,606          | 220          | 39,167          |
| Nov          | 42             | 4,854         | 4,482         | 9,336           | 11,431          | 684           | 12,115          | 2,684         | 19,316          | 130          | 43,581          |
| Dec          | 44             | 4,952         | 5,072         | 10,024          | 12,753          | 1,358         | 14,111          | 2,626         | 18,454          | 122          | 45,337          |
| Jan          | 46             | 5,046         | 2,598         | 7,644           | 9,001           | 1,683         | 10,684          | 1,310         | 18,675          | 192          | 38,505          |
| Feb          | 35             | 4,296         | 4,446         | 8,742           | 10,249          | 2,229         | 12,478          | 1,358         | 14,150          | 116          | 36,844          |
| Mar          | 37             | 4,531         | 4,421         | 8,952           | 13,356          | 965           | 14,321          | 1,466         | 18,185          | 374          | 43,298          |
| <b>Total</b> | <b>471</b>     | <b>54,653</b> | <b>46,190</b> | <b>1,00,843</b> | <b>1,25,682</b> | <b>22,624</b> | <b>1,48,306</b> | <b>18,212</b> | <b>2,12,189</b> | <b>1,858</b> | <b>4,81,408</b> |

## Financial Year Terminal Growth Since FY 13-14







**THANK YOU**